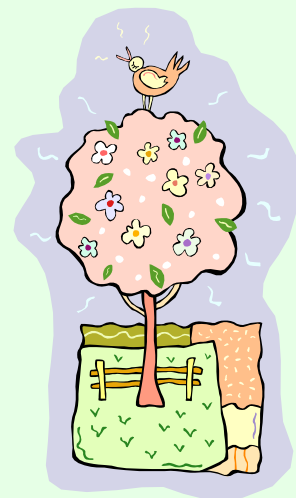


## **LET'S PLANT SOME TREES!!!!**

### **SEA ISLE CITY ORDINANCE 1435**

**“To Allow trees to be planted between curb and sidewalk and to more specifically list the type of trees to be planted therein.”**

**Cherries and Plums      Dogwoods and Mountainash  
Ornamental Crabapples      Hawthorns  
Magnolias      Holly Trees      Bradford Pear**



**IF EVERY MEMBER OF SICTA PLANTED A TREE THIS YEAR, WE WOULD  
HAVE OVER 1500 NEW TREES LINING OUR CITY STREETS.  
LET'S DO IT!**

**Here are some tips we have gathered that you might find helpful-**

For our Weekend Residents—you may find tree watering bags advantageous. Here's an excerpt from a Seattle tree program

In order to help new trees grow and thrive, Seattle Department of Transportation (SDOT) zips water bags around trees the first two to three summer seasons. Each watering bag, which holds 20 gallons, is filled with water once a week, enough to support the tree through summer. Water slowly drips into the soil over 6-10 hours. Bags are left on the tree until the next round of watering occurs so you may see empty bags throughout the city

These bags cost about \$15 to \$20....and you may enlist your neighbors help to re-fill them when you can't make it down to the shore.

**Safe Digging for Gardeners and Do-It-Yourselfers—Call 811!**

**Q. What is 811?**

**A. 811 is a new national “Call Before You Dig” number designated by the FCC to help protect homeowners and professional excavators from injuries, expenses and penalties. This new national safety resource will make it easy for homeowners and professionals across the country to protect themselves by calling before beginning any digging project, whether it be something small like planting a tree or installing a mailbox or a larger project like building an addition or deck.**

**excerpted from: [http://gardening about.com/od/gettingstarted/a811.htm](http://gardening.about.com/od/gettingstarted/a811.htm)**